

# GROW STRONGER

---



OPTIMISE HOST HEALING IN A NEW  
ERA OF TRUE BONE REGENERATION



**THE BEST  
DENTISTS  
DON'T  
STAND  
STILL.  
THEY'RE  
ALWAYS  
GROWING.**

Born from a desire to move beyond traditional “GBR”, donor grafts and artificial scaffolds, EthOss was created to pioneer True Bone Regeneration in dentistry and oral surgery.

The initial concept was simple: “the body wants to heal, let’s work with it”. This was key to the development of EthOss – a material which works with the body, upregulating the host healing response to regenerate lost bone.

Founded by Dr Peter Fairbairn, a world-renowned clinician, and Dr Paul Harrison, a leading bone regeneration industry expert, the company has grown significantly since being founded in 2013 and is now a global brand.

**Do your best  
work with the  
new standard.**

# WHY ETHOSS?



## SIMPLER

Its built-in calcium sulphate binder helps stabilise the graft and prevent soft tissue ingress, eliminating the need for an added collagen membrane.

## SAFER

EthOss is 100% synthetic. There's no human or animal content, so no risk of cross contamination.

## EASIER

EthOss comes in a handy syringe applicator, in three sizes - 0.25cc, 0.5cc and 1.0cc. It's easy to mix, quick to apply and, because it keeps its volume well, there's no need for over-packing.

## STRONGER

EthOss is fully absorbed by the body, as it's replaced by new healthy host bone - up to 50% in as little as 12 weeks.





# TRUSTED MATERIALS, INNOVATIVE COMBINATION.

EthOss is a combination of 65% B-Tricalcium Phosphate and 35% Calcium Sulphate. This innovative combination is key to its' success.

## Why Beta-Tricalcium Phosphate (B-TCP)?

B-TCP has been used medically for many years and is widely researched and trusted, with several benefits which make it particularly suitable for dentistry:

- Full resorption in line with the rate of new host bone formation
- Osteoconductive
- High osteoinductive potential with a large research base in this area
- Patient preference - no concerns over donor tissue or cross infection risks
- All B-TCP is not the same - EthOss uses the latest generation of the material

## Why Calcium Sulphate?

The oldest recorded biomaterial, Calcium Sulphate has been used in surgery for over 120 years.

Whilst it does not possess the same bone regeneration capabilities as B-TCP, Calcium Sulphate brings one major benefit to the equation: it sets in situ, creating a stable graft with an integrated cell-occlusive barrier. This helps prevent soft tissue ingress, **removing the need for a separate collagen membrane** and giving the periosteum (and related blood supply) direct access to the graft site from day one.

## In Combination

The unique combination of these two materials gives EthOss significant benefits – regenerating host bone quickly (human biopsies regularly show 50% new bone at 12 weeks) and without the need for a separate collagen membrane.

## Specifications

Composition	65% beta-tricalcium phosphate (B-TCP) $\text{Ca}_3(\text{PO}_4)_2$ 35% calcium sulfate $\text{CaSO}_4$
Porosity	50% - 70%
Resorption	50% new bone in 12 weeks
Mixing agent	Standard sterile saline (0.9% Sodium Chloride) only
Recommended re-entry time	12 weeks
Units available	3 x 0.25cc 3 x 0.5cc 3 x 1cc

A histological image of bone tissue stained with hematoxylin and eosin (H&E). The image shows a cross-section of bone with various cellular structures, including osteons and trabeculae. The text is overlaid on the right side of the image.

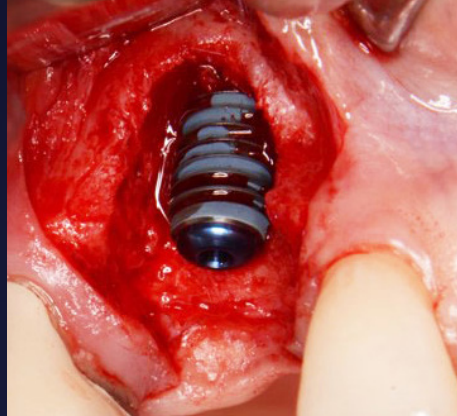
50% NEW BONE.  
HUMAN HISTOLOGY  
AFTER 12 WEEKS.



# CASE STUDY



3 weeks healing post extraction



Implant placement & EthOss palatal graft



Simultaneous EthOss buccal graft



New bone formation at 12 weeks - grown over implant



EthOss is the ideal bone grafting material. The Calcium Sulphate component not only removes the need for a membrane, but it has bacteriostatic properties which minimise infections.

**Dr Costa Nicolopoulos, UAE**



EthOss has simplified my bone augmentation procedures. Easy handling, very stable and predictable reproducible results. So dependable, I can't operate without it.

**Dr Peter Bouboulos, Australia**



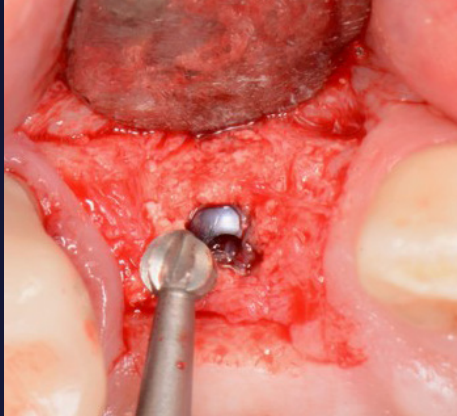
The clinical properties of EthOss make it a highly desirable grafting material, providing a modern bone regeneration solution.

**Dr Verena Toedtling, UK**



EthOss combines mechanical integrity with predictable biologic results - it is a pleasure to use it in my daily practice.

**Dr H.L. Tan, Malaysia**



Bur needed to access implant



Loaded 1 year



The superior handling combined with excellent clinical results means that for me, EthOss is a must.

**Dr Wasim Fazel, UK**



I'm delighted to have discovered EthOss - it gives consistent & predictable results, is easy to handle and turns over to new bone quickly.

**Dr Nicolas Widmer, Switzerland**

## CLINICAL APPLICATIONS WITH ETHOSS INCLUDE:

- **BUCCAL DEFECTS**
- **SINUS  
AUGMENTATION**
- **RIDGE  
PRESERVATION**
- **PERIODONTAL  
DEFECTS**
- **PERI-IMPLANTITIS**
- **CYST SITE  
RESTORATION**



# WELCOME TO THE NEW STANDARD.

© EthOss Regeneration Ltd, 2020. All rights reserved

EthOss Regeneration Ltd  
8 Ryefield Court, Silsden,  
BD20 0DL, UK

Tel: +44 (0) 1535 843106  
[info@ethoss.dental](mailto:info@ethoss.dental)  
[www.ethoss.dental](http://www.ethoss.dental)

[www.ethoss.dental](http://www.ethoss.dental)